

# Almaden Expressway

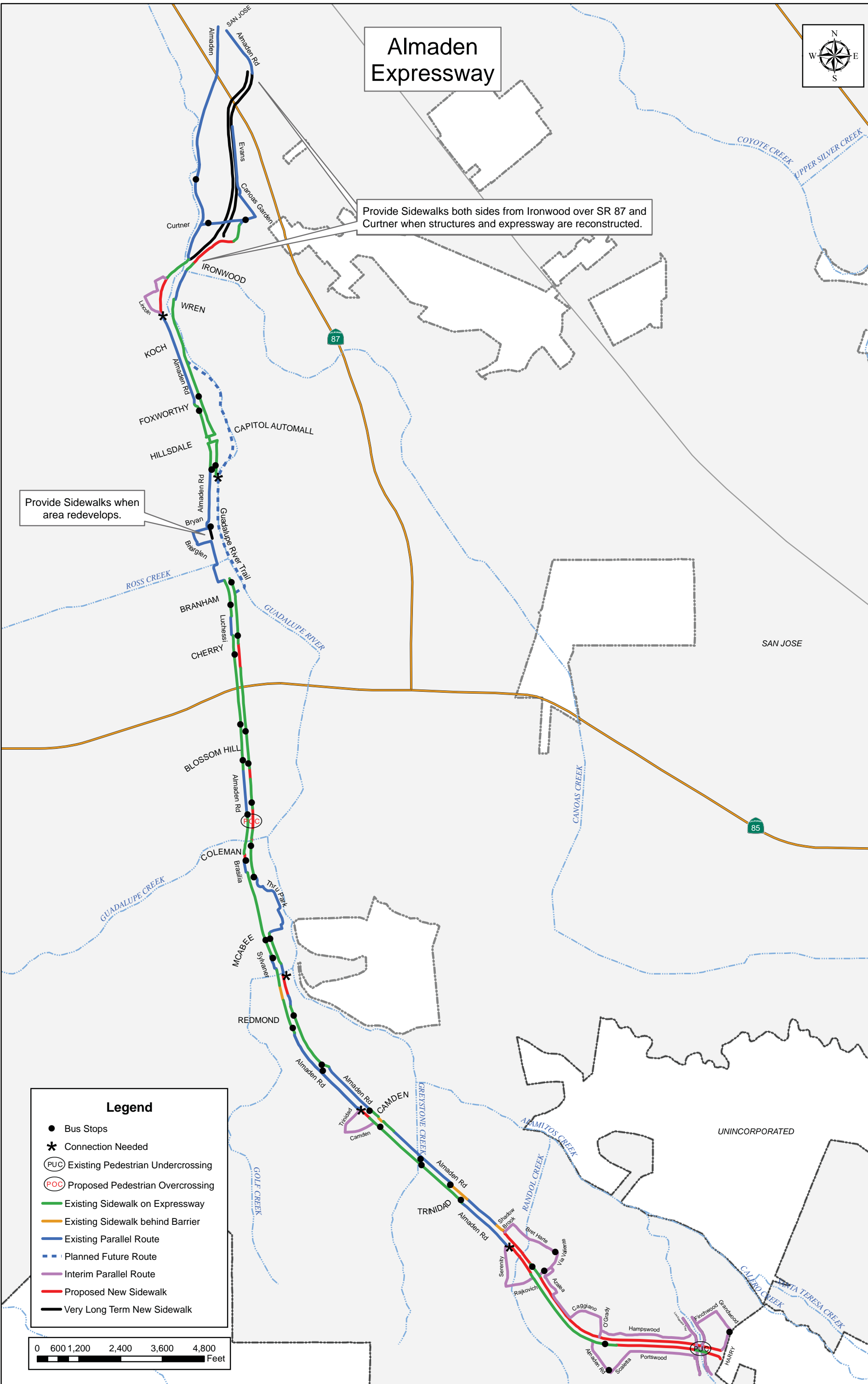
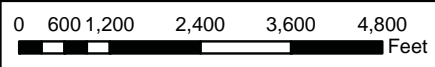


Provide Sidewalks both sides from Ironwood over SR 87 and Curtner when structures and expressway are reconstructed.

Provide Sidewalks when area redevelops.

**Legend**

- Bus Stops
- \* Connection Needed
- (PUC) Existing Pedestrian Undercrossing
- (POC) Proposed Pedestrian Overcrossing
- Existing Sidewalk on Expressway
- Existing Sidewalk behind Barrier
- Existing Parallel Route
- - - Planned Future Route
- Interim Parallel Route
- Proposed New Sidewalk
- Very Long Term New Sidewalk



UNINCORPORATED