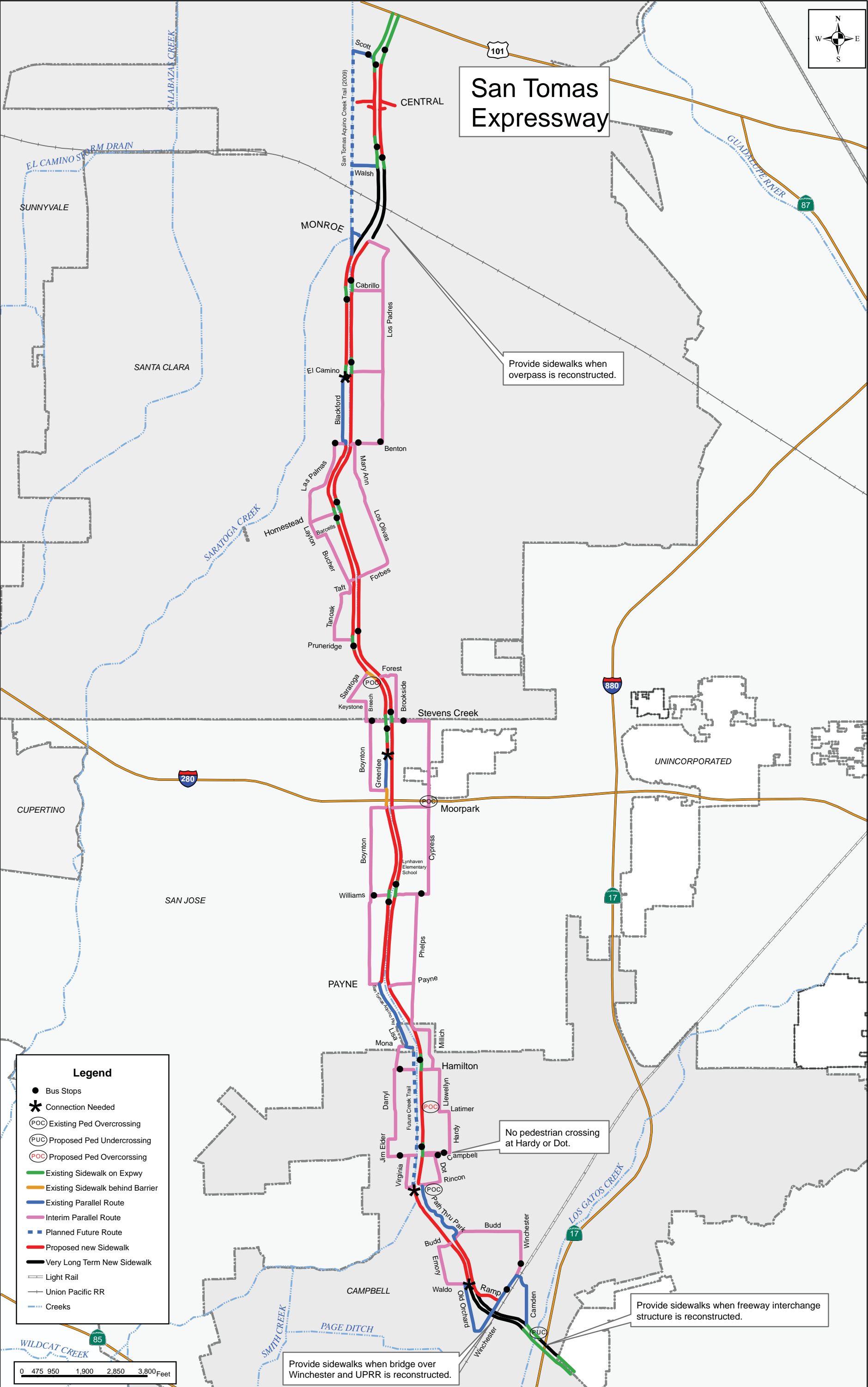




San Tomas Expressway



Provide sidewalks when overpass is reconstructed.

No pedestrian crossing at Hardy or Dot.

Provide sidewalks when freeway interchange structure is reconstructed.

Provide sidewalks when bridge over Winchester and UPRR is reconstructed.

Legend

- Bus Stops
- * Connection Needed
- ⊙(OC) Existing Ped Overcrossing
- ⊙(UC) Proposed Ped Undercrossing
- ⊙(OC) Proposed Ped Overcrossing
- Existing Sidewalk on Expwy
- Existing Sidewalk behind Barrier
- Existing Parallel Route
- Interim Parallel Route
- Planned Future Route
- Proposed new Sidewalk
- Very Long Term New Sidewalk
- Light Rail
- Union Pacific RR
- Creeks

